



Congratulations on buying the Demopad DemoControl Lite app for the KIRA128 / IRCM!

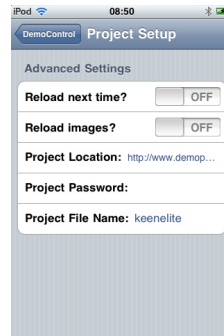
There are two parts to the set-up process:

Part One

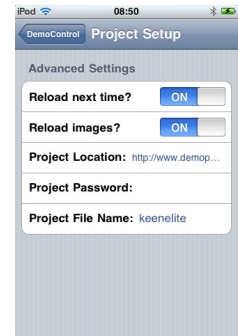
Install the Democontrol Lite app onto your iPod, iPhone or iPad. Ensure that you can connect to the internet, then go to the “settings” page and select “Democontrol”



Enter
“Project Setup” >



Change the switches
“Reload next time” and
“Reload images” to “ON”



For **iPhone** enter “<http://www.demopad.com/keenelite>” for the Project Location and “keenelite” for the Project File Name

For **iPad** enter “<http://www.demopad.com/keenelite/iPad>” for the Project Location and “keeneliteipad” for the Project File Name.

Exit the settings menu and launch the Democontrol app. This one-time operation will load all of the necessary information from the Demopad server. Now exit the Democontrol app and go back to the settings menu. You can now change the “Reload next time” and “Reload images” switches back to “OFF”

If you have already installed your KIRA128 or IR Commander Matrix you can now go into the “Device Addresses” page and enter the IP address for your IR unit. The “Port” should be left at the default setting of 65432. If you have not yet installed your IR device you should do that next and then return to this stage.

The “Remote Location” setting can be used if you wish to control your Keene IR device whilst away from home (enter your external IP address and set port forwarding). It can also be used to control a second Keene IR device should you wish. This setting becomes active when the “Remote access” flag is changed to “ON” from the main “settings” page.

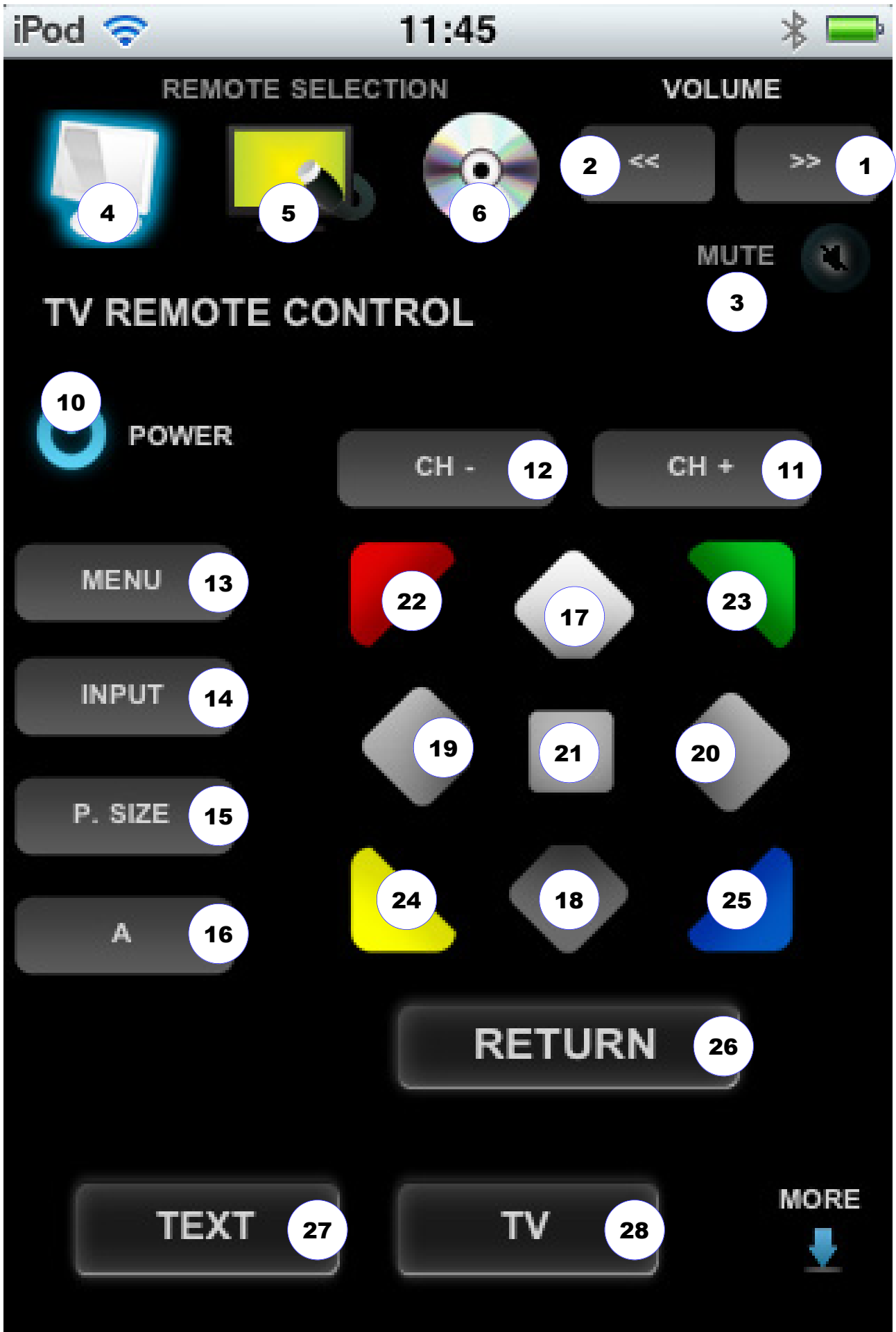


Part two

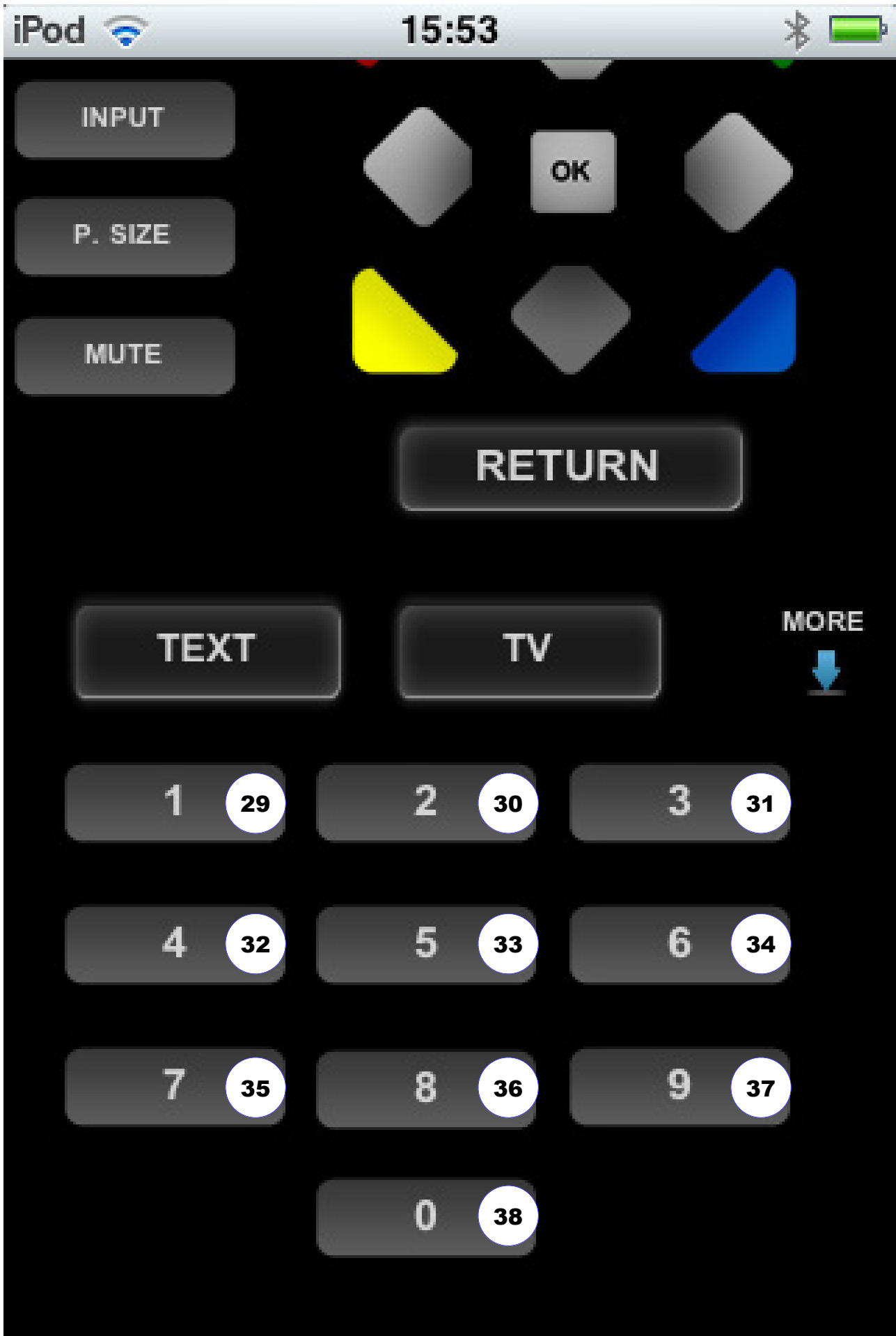
All that remains is to store the IR command for each device against the appropriate memory location in the KIRA128 or IR Commander Matrix. This is done using the java program supplied with the Keene IR unit, (also available from <http://www.keene.co.uk/iranywhere>)

The following pages show you which memory location is mapped to each key, together with a look-up table.

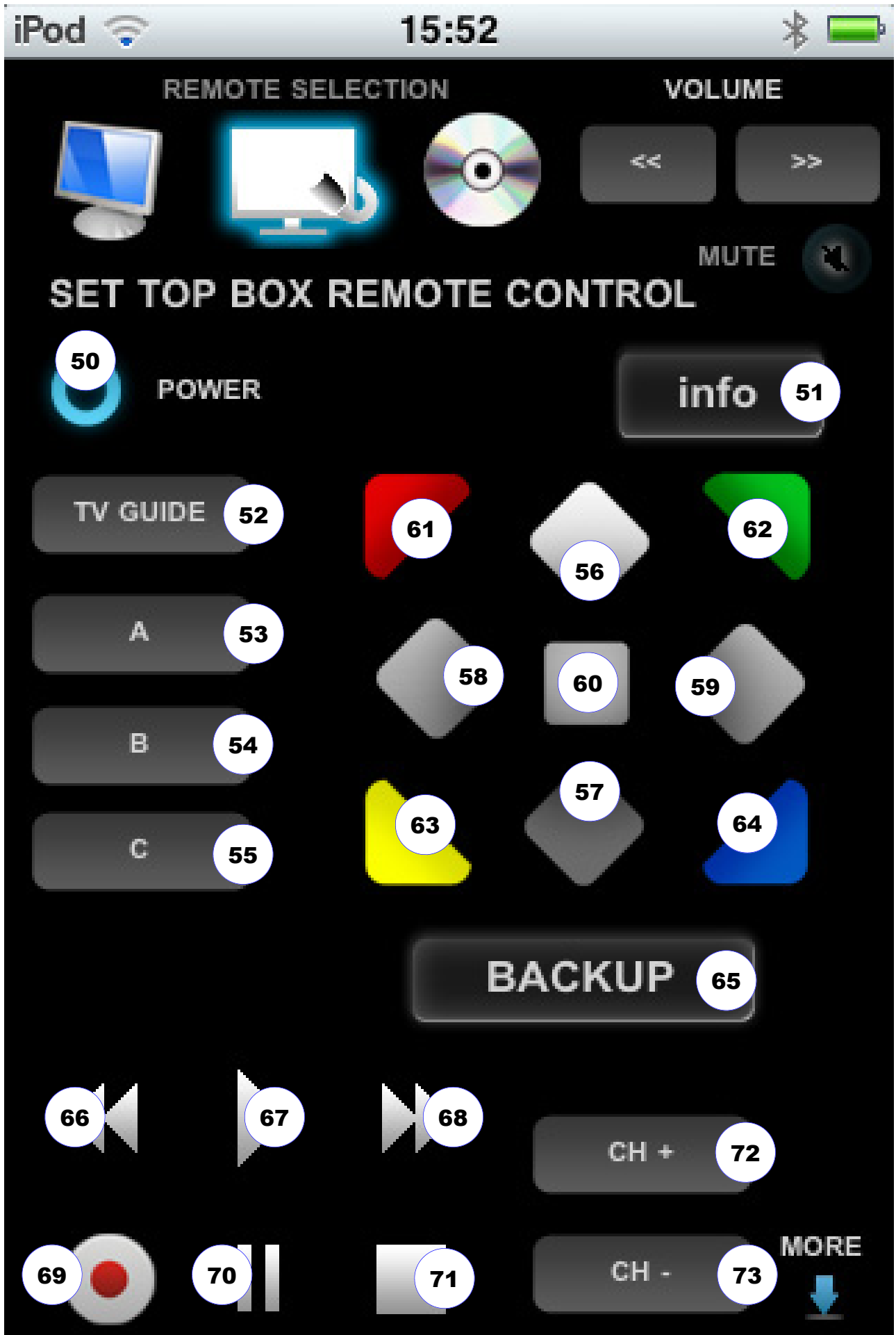
TV upper page



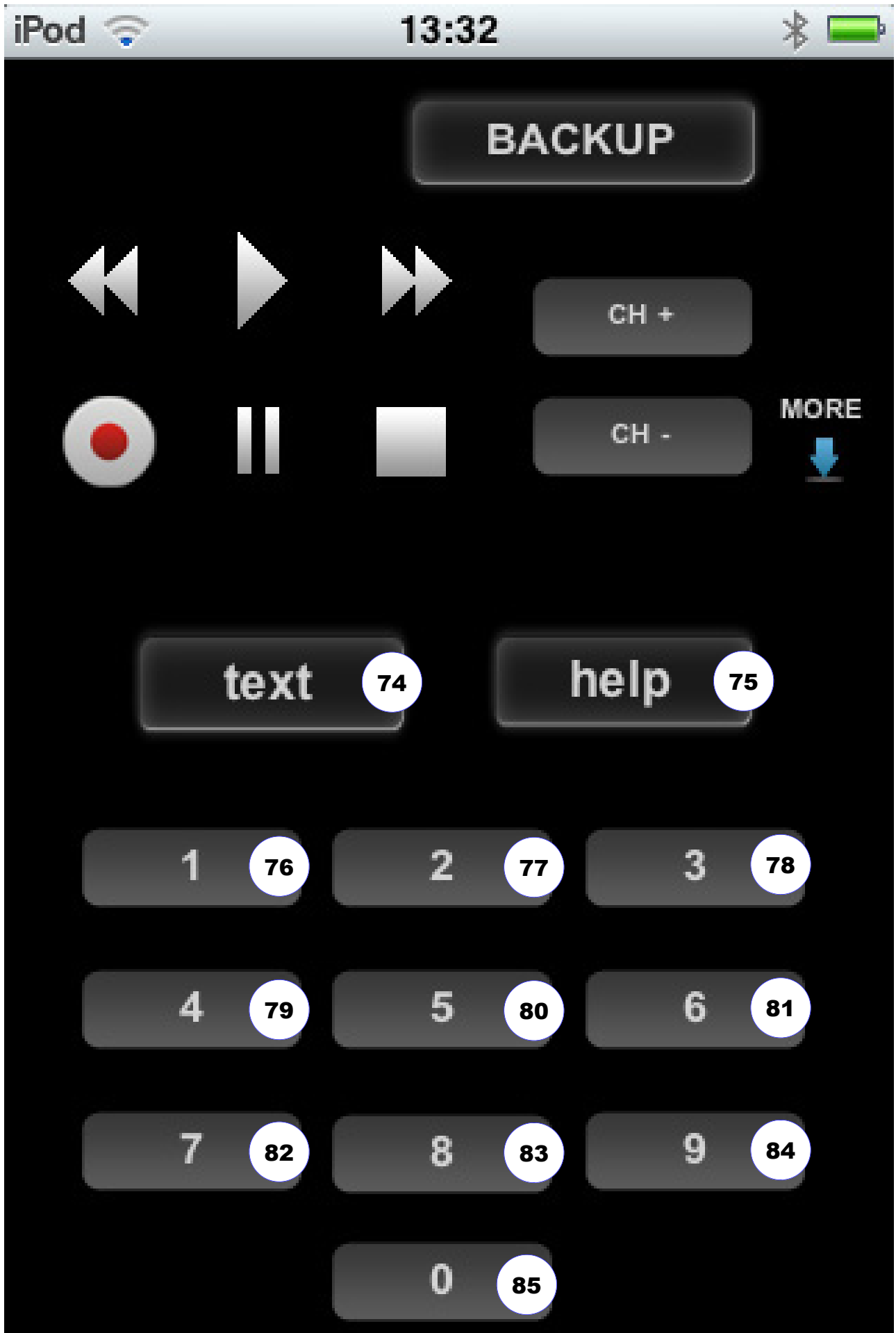
TV lower page



Set top box upper page



Set top box lower page



DVD page

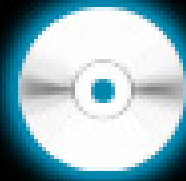
iPod



15:52



REMOTE SELECTION



VOLUME

<<

>>

MUTE



DVD REMOTE CONTROL

95



POWER

103



98



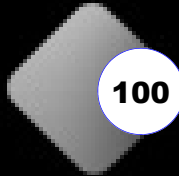
104



MENU

96

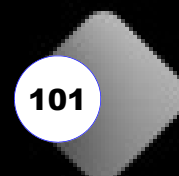
100



102



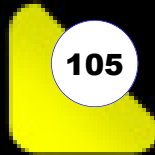
101



SETUP

97

105



99



106



108



PLAY

BACKUP

107

109



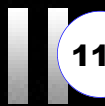
110



111



112



113



114



Button memory location quick reference guide

Button	memory location	TV Page	memory location	Set Top Box Page	memory location
Volume +	1	POWER	10	POWER	50
Volume -	2	CH+	11	INFO	51
Mute	3	CH-	12	TV GUIDE	52
Source TV	4	MENU	13	A	53
Source STB	5	INPUT	14	B	54
Source DVD	6	P.SIZE	15	C	55
The source buttons can be used to switch between inputs if desired.		A*	16	UP	56
		UP	17	DOWN	57
		DOWN	18	LEFT	58
		LEFT	19	RIGHT	59
		RIGHT	20	OK	60
		OK	21	RED	61
		RED	22	GREEN	62
		GREEN	23	YELLOW	63
		YELLOW	24	BLUE	64
		BLUE	25	BACKUP	65
		RETURN	26	REWIND	66
		TEXT	27	PLAY	67
		TV	28	FASTFORWARD	68
		1	29	RECORD	69
		2	30	PAUSE	70
		3	31	STOP	71
		4	32	CH+	72
		5	33	CH-	73
		6	34	TEXT	74
		7	35	HELP	75
		8	36	1	76
		9	37	2	77
		0	38	3	78
				4	79
				5	80
				6	81
				7	82
				8	83
				9	84
				0	85

DVD Page	memory location
POWER	95
MENU	96
SETUP	97
UP	98
DOWN	99
LEFT	100
RIGHT	101
OK	102
RED	103
GREEN	104
YELLOW	105
BLUE	106
BACKUP	107
PLAY	108
REWIND	109
FASTFORWARD	110
STOP	111
PAUSE	112
SKIP-	113
SKIP+	114

*A can be assigned for any custom function not covered by the standard keys.